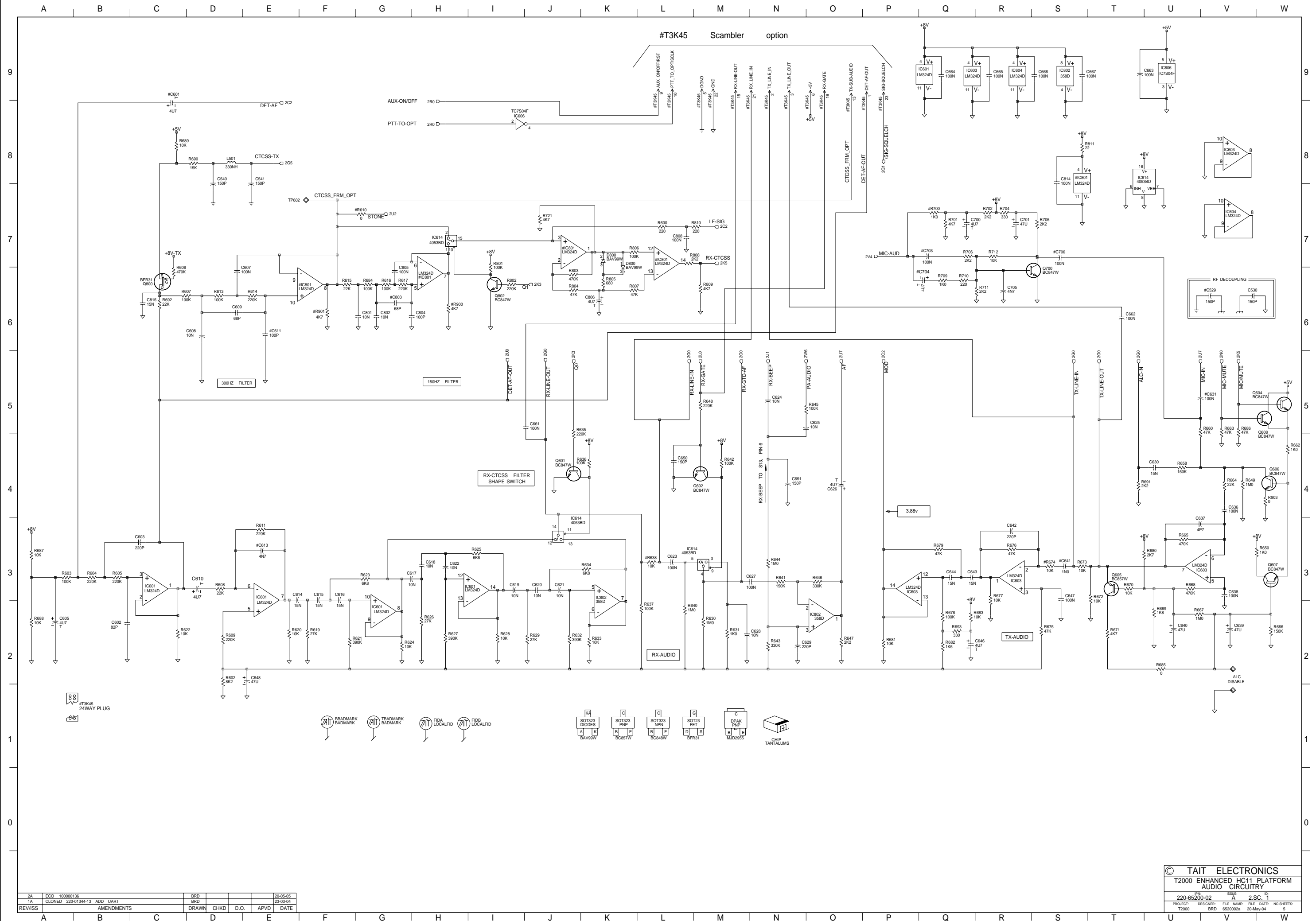


#T3K45 Scrambler option

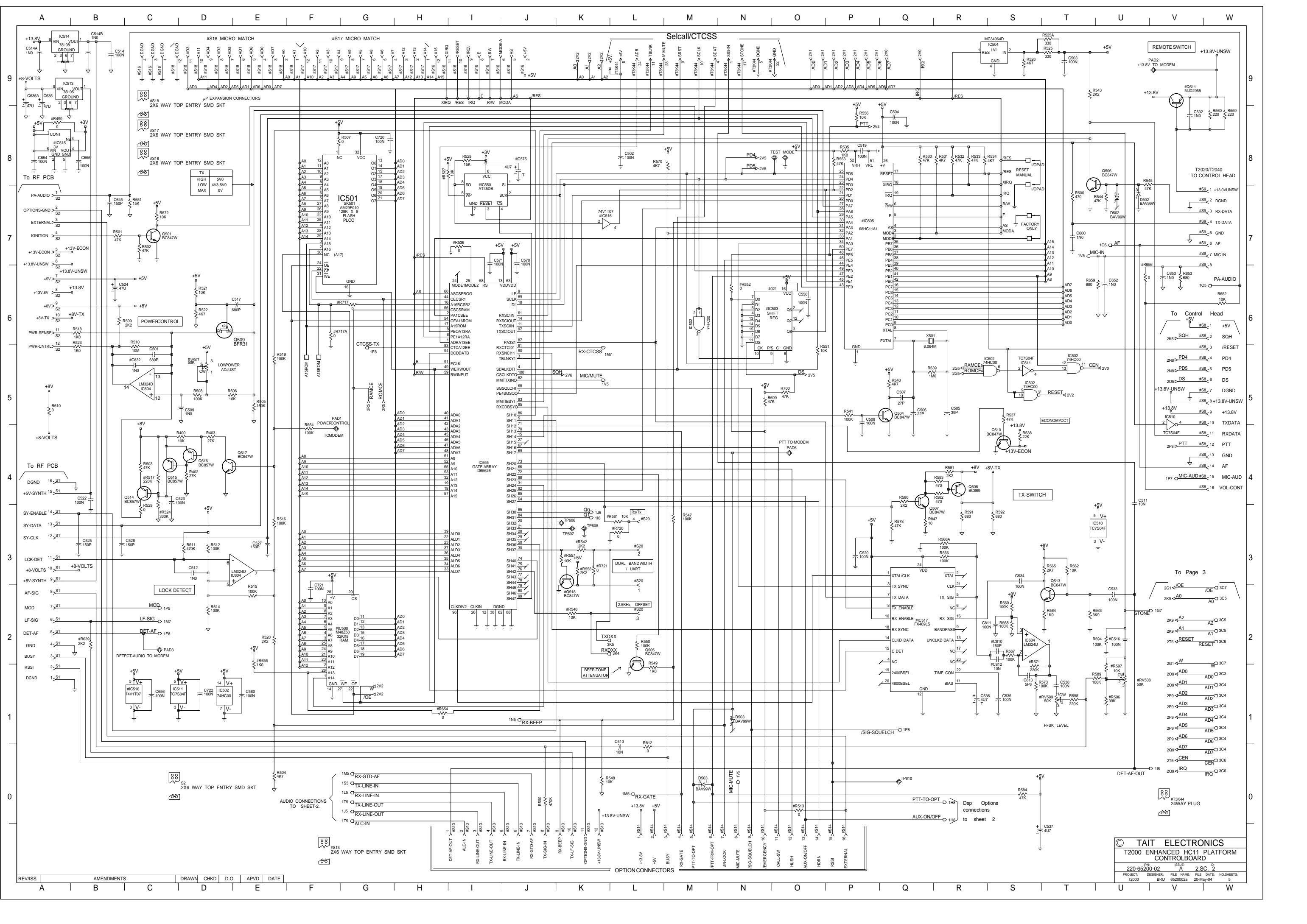


#T3K45  
24WAY PLUG

- SOT23 DIODES  
BAV99W
- SOT23 PNP  
BC847W
- SOT23 NPN  
BC848W
- SOT23 FET  
BFR31
- DPAK PNP  
MJD2955
- CHIP  
TANTALUMS

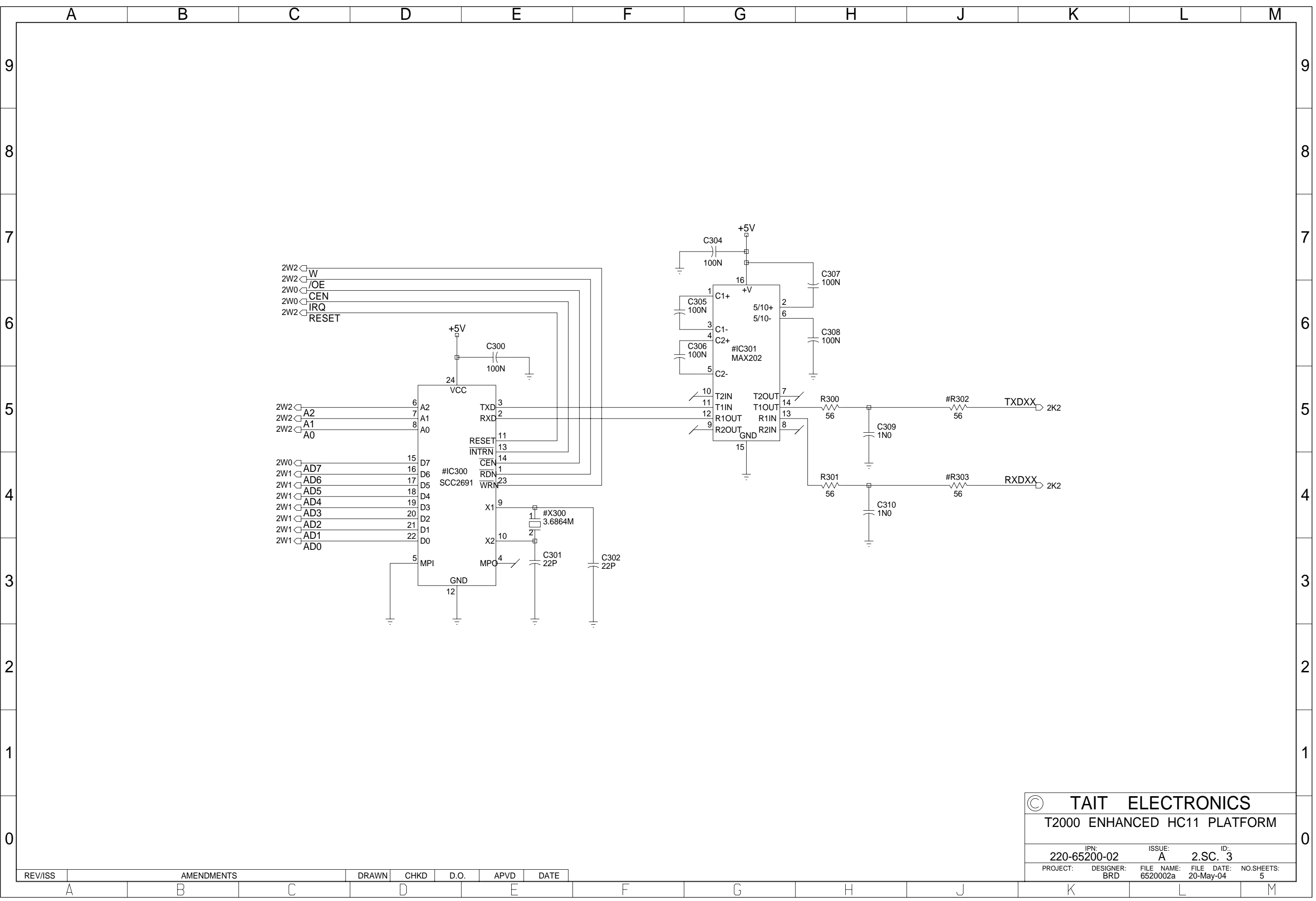
2A	ECO	100000130	BRD			20-05-05
1A	CLONED	220-01344-13	ADD	UART		23-03-04
REV/ISS		AMENDMENTS	DRAWN	CHKD	D.O.	APVD
						DATE

© TAIT ELECTRONICS  
**T2000 ENHANCED HC11 PLATFORM**  
**AUDIO CIRCUITRY**  
 IPN: 220-65200-02  
 ISSUE: A  
 ID: 2 SC. 1  
 PROJECT: T2000  
 DESIGNER: BRD  
 FILE NAME: 6500002a  
 DATE: 20-May-04  
 NO SHEETS: 5



© TAIT ELECTRONICS  
 T2000 ENHANCED HC11 PLATFORM  
 CONTROL BOARD  
 PROJECT: 220-65200-02  
 DESIGNER: FILE NAME: T2000  
 BRD: 65000020 20-May-04  
 ISSUE: 2  
 DATE: NO SHEETS: 5

REV/ISS	AMENDMENTS	DRAWN	CHKD	D.O.	APVD	DATE



© TAIT ELECTRONICS  
T2000 ENHANCED HC11 PLATFORM

IPN: 220-65200-02	ISSUE: A	ID: 2.S.C. 3
PROJECT: BRD	DESIGNER: 6520002a	FILE DATE: 20-May-04
		NO.SHEETS: 5

REV/ISS	AMENDMENTS	DRAWN	CHKD	D.O.	APVD	DATE

OPTION	DESCRIPTION	#C529	#C601	#C613	#C631	#C641	#C706	#C810	#C812	#IC503	#IC505	#IC517	#Q511	#R542	#R552	#R571	#R638	#R639	#R674	
X2L217G	T2017 CONVENTIONAL DUAL BAND	150p	470n	Tant	4n7	NF	1n	100n	NF	NF	MC14021	MC68HC11E1	NF	MJD2955	2k2	NF	0E	10k	2k2	10k
X2L061	T2020 CONVENTIONAL (T2020-XXX-X60 ONLY)	150p	470n	Tant	4n7	100n	1n	NF	NF	NF	NF	MC68HC11A1	NF	MJD2955	2k2	0E	0E	10k	2k2	10k
X2L220	T2020 CONVENTIONAL 100 CHANNEL	150p	470n	Tant	4n7	100n	1n	NF	NF	NF	NF	MC68HC11E1	NF	MJD2955	2k2	0E	0E	10k	2k2	10k
X2L220G	T2020 CONVENTIONAL 100 CHANNEL	150p	470n	Tant	4n7	100n	1n	NF	NF	NF	NF	MC68HC11E1	NF	MJD2955	2k2	0E	0E	10k	2k2	10k
X2L222	T2020 CONVENTIONAL DUAL BAND STANDARD	150p	470n	Tant	4n7	100n	1n	NF	NF	NF	NF	MC68HC11E1	NF	MJD2955	2k2	0E	0E	10k	2k2	10k
X2L225	T2020 CONVENTIONAL NZFS	150p	470n	Tant	4n7	100n	1n	NF	NF	NF	NF	MC68HC11A1	NF	MJD2955	0E	0E	0E	0E	NF	10k
X2L226C	T2020 CONVENTIONAL NO PRE EMPHASIS / NO DE EMPHASIS	150p	470n	Tant	33k	100n	47n	NF	NF	NF	NF	MC68HC11E1	NF	MJD2955	2k2	0E	0E	10k	2k2	180k
X2L227	T2020 CONVENTIONAL DUAL BAND	150p	470n	Tant	4n7	100n	1n	NF	NF	NF	NF	MC68HC11E1	NF	MJD2955	2k2	0E	0E	10k	2k2	10k
X2L230	T2030 TRUNKED STANDARD	150p	4u7	Tant	4n7	NF	1n	100n	NF	10n	MC14021	MC68HC11E1	FX469LS	NF	2k2	NF	220k	10k	2k2	10k
X2L235	T2035 TRUNKED STANDARD	150p	4u7	Tant	4n7	NF	1n	100n	NF	10n	MC14021	MC68HC11E1	FX469LS	NF	2k2	NF	220k	10k	2k2	10k
X2L236	T203X TRUNKED ALT PRE EMPHASIS	150p	4u7	Tant	4n7	NF	1n	100n	150p	150p	MC14021	MC68HC11E1	FX469LS	NF	2k2	NF	470k	10k	2k2	10k
X2L237	T203X TRUNKED	150p	4u7	Tant	4n7	NF	1n	100n	NF	10n	MC14021	MC68HC11E1	FX469LS	NF	2k2	NF	220k	10k	2k2	10k
X2L238	T203X TRUNKED ALT PRE EMPHASIS	150p	4u7	Tant	4n7	NF	1n	100n	150p	150p	MC14021	MC68HC11E1	FX469LS	NF	2k2	NF	470k	10k	2k2	10k
X2L240	T2040 TRUNKED STANDARD	150p	4u7	Tant	4n7	100n	1n	NF	NF	10n	NF	MC68HC11E1	FX469LS	MJD2955	2k2	0E	220k	10k	2k2	10k
X2L241	T2040 TRUNKED ALT PRE EMPHASIS	150p	4u7	Tant	4n7	100n	1n	NF	150p	150p	NF	MC68HC11E1	FX469LS	MJD2955	2k2	0E	470k	10k	2k2	10k

OPTION	DESCRIPTION	#R717	#R717A	#RV599	#S8	#S9	#S13	#S14	#S16	#S17	#S18	#S20	#T3K45	#T3K44
X2L217G	T2017 CONVENTIONAL DUAL BAND	NF	0E	NF	Fitted	NF	NF	NF	NF	NF	NF	Fitted	Fitted	Fitted
X2L061	T2020 CONVENTIONAL (T2020-XXX-X60 ONLY)	NF	0E	NF	NF	Fitted	Fitted	Fitted	Fitted	Fitted	Fitted	NF	Fitted	Fitted
X2L220	T2020 CONVENTIONAL 100 CHANNEL	NF	0E	NF	NF	Fitted	Fitted	Fitted	Fitted	Fitted	Fitted	Fitted	Fitted	Fitted
X2L220G	T2020 CONVENTIONAL 100 CHANNEL	NF	0E	NF	NF	Fitted	NF	NF	NF	NF	NF	Fitted	Fitted	Fitted
X2L222	T2020 CONVENTIONAL DUAL BAND STANDARD	NF	0E	NF	NF	Fitted	Fitted	Fitted	Fitted	Fitted	Fitted	Fitted	Fitted	Fitted
X2L225	T2020 CONVENTIONAL NZFS	NF	0E	NF	NF	Fitted	Fitted	Fitted	Fitted	Fitted	Fitted	NF	Fitted	Fitted
X2L226C	T2020 CONVENTIONAL NO PRE EMPHASIS / NO DE EMPHASIS	NF	0E	NF	NF	Fitted	Fitted	Fitted	NF	NF	NF	Fitted	Fitted	Fitted
X2L227	T2020 CONVENTIONAL DUAL BAND	NF	0E	NF	NF	Fitted	Fitted	Fitted	Fitted	Fitted	Fitted	Fitted	Fitted	Fitted
X2L230	T2030 TRUNKED STANDARD	0E	NF	50k	Fitted	NF	Fitted	Fitted	Fitted	Fitted	Fitted	NF	Fitted	Fitted
X2L235	T2035 TRUNKED STANDARD	0E	NF	50k	Fitted	NF	Fitted	Fitted	Fitted	Fitted	Fitted	NF	Fitted	Fitted
X2L236	T203X TRUNKED ALT PRE EMPHASIS	0E	NF	50k	Fitted	Fitted	Fitted	Fitted	Fitted	Fitted	Fitted	NF	Fitted	Fitted
X2L237	T203X TRUNKED	0E	NF	50k	Fitted	NF	Fitted	Fitted	Fitted	Fitted	Fitted	NF	Fitted	Fitted
X2L238	T203X TRUNKED ALT PRE EMPHASIS	0E	NF	50k	Fitted	NF	Fitted	Fitted	Fitted	Fitted	Fitted	NF	Fitted	Fitted
X2L240	T2040 TRUNKED STANDARD	0E	NF	50k	NF	Fitted	Fitted	Fitted	Fitted	Fitted	Fitted	NF	Fitted	Fitted
X2L241	T2040 TRUNKED ALT PRE EMPHASIS	0E	NF	50k	NF	Fitted	Fitted	Fitted	Fitted	Fitted	Fitted	NF	Fitted	Fitted

© TAIT ELECTRONICS  
T2000 ENHANCED HC11 PLATFORM  
CONTROLBOARD

IPN: 220-65200-02      ISSUE: A      ID: 2.SC. 4

PROJECT: BRD      DESIGNER: BRD      FILE NAME: 6520002a      FILE DATE: 20-May-04      NO.SHEETS: 5

REV/ISS	AMENDMENTS	DRAWN	CHKD	D.O.	APVD	DATE
A						

MICROPHONE TYPE	#C704	#C703	#R700
Dynamic (std)	4u7 Tant	NF	NF
Electret	NF	100N	1k

SUB AUDIBLE SIGNAL OPTION	#R900	#C516	#C803	#IC801	#R610	#R901	#R902
X2L217G	4k7	100N	68p	LM324	NF	4k7	NF
X2L061	4k7	100N	68p	LM324	NF	4k7	NF
X2L22XX	4k7	100N	68p	LM324	NF	4k7	NF
X2L23X	NF	NF	68p	NF	0E	NF	NF
X2L24X	NF	NF	68p	NF	0E	NF	NF
X2L242	NF	NF	4p7	NF	0E	NF	NF

MEMORYTYPE	#IC500	#R654	#R655
NVRAM	M48Z58Y	0E	NF
"SRAM (NOTE: SRAM requires 1200 Channel option, refer to 'MEMORY SIZE' TABLE)"	W24655S	NF	1k

MEMORY SIZE	#IC550	#C575	#IC515	#IC516	#R499	R527	#R536
1200 Channel 3V Serial Flash Option	AT45DB011	FITTED	FITTED	FITTED	NF	10k	0E
1200 Channel 5V Serial Flash Option	AT45D011	FITTED	NF	FITTED	0E	10k	0E
100 Channel	NF	NF	NF	NF	NF	NF	NF

POWER RAMP UP/DOWN	#R517	#C832	#R524
Std	220k	1n	330k

SELCALL SIGNALLING LEVEL	#RV508	#R596	#R597
Fixed (std)	NF	39k	10k
Adjustable	50k	NF	NF

BANDWIDTH OPTION	#R557	#Q518	#R542	#R558	#S20
Single Bandwidth	NF	NF	2k2	NF	NF
Dual Bandwidth	NF	NF	2k2	NF	FITTED
Inverted Dual Bandwidth	10k	FITTED	NF	2k2	FITTED
NZFS Dual Bandwidth	NF	NF	0E	NF	FITTED

EMERGENCY-EXTERNAL LINK	#R513
Enabled	0E
Disabled	NF

UART Option	#R561	#IC300	#IC301	#R302	#R303	#R546	#X300
Fitted	NF	Fitted	Fitted	Fitted	Fitted	NF	Fitted
Not Fitted	Fitted	NF	NF	NF	NF	Fitted	NF

© TAIT ELECTRONICS				
T2000 ENHANCED HC11 PLATFORM CONTROLBOARD				
IPN: 220-65200-02	ISSUE: A	ID: 2.SC. 5		
PROJECT: BRD	DESIGNER: BRD	FILE NAME: 6520002a	FILE DATE: 20-May-04	NO.SHEETS: 5

REV/ISS	AMENDMENTS	DRAWN	CHKD	D.O.	APVD	DATE